

120es

1.2 Million Pixel Digital Camera System

Windows® & Mac® OS



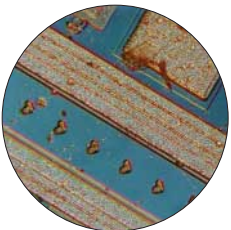
Rat Kangaroo Surface Skin Cell/Kidney
Rodamin-Phalloidin



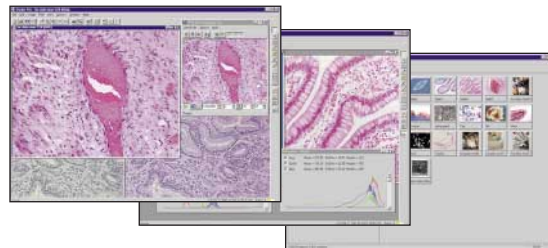
3T3 Cells-Starring of Actin Skeleton
FITC Flophores



Brightfield
H&E Stain



Integrated Circuit Wafer
Nomarski



1.2 Million Pixels¹⁾
Enhanced Image Processing
Sensitivity, 0.3lux Up to 10x Sensitivity*
Frame Averaging - Up to 256 frames
Dynamic Histogram Functions
Precision Measurement Tools

¹⁾ 1.2 million pixels is achieved by patented DiRactor™ technology.

²⁾ Up to 10x Sensitivity when compared with the Pixera Professional

Applications:

- Fluorescence
- Darkfield Transmitted/Reflected
- Brightfield Transmitted/Reflected
- Polarized Light
- Phase Contrast
- Nomarski Transmitted/Reflected
- Materials Science

The **120es Application Suite** include several easy to use tools that help the user optimize Capture Control, Image Quality and Productivity for a special application.

120es - Digital Camera System

The 120es is a versatile, Digital Camera System with enhanced image processing capabilities that makes it the perfect choice for a broad range of biomedical and industrial applications. Incorporating sophisticated image processing functions for frame averaging, dynamic histogram options and precise measuring tools, the 120es Digital Camera System sets a new level of price performance in digital imaging.

120es Application Suite - Advanced Features for Microscopy

The 120es Application Suite offers a full set of powerful image capture and archiving tools. The integrated set of applications delivers professional quality flexibility and functionality for capturing, analyzing, manipulating and archiving digital images with low noise, accurate colors, sharp edges and excellent details.

Based on Pixera's unique DiRactor™ light refracting technology and proprietary image processing software, the 120es Digital Camera System and the 120es Application Suite deliver image quality previously attainable only with cooled CCD cameras.

Pixera Corporation (USA/International)

Tel: (1) 408 341 1800, Tollfree: 1-888-474-9372
 Fax: (1) 408 341 1818
 sales@pixera.com
 www.pixera.com

Pixera UK Ltd (Europe)

Tel: +44 (0) 118 931 9635
 Fax: +44 (0) 118 931 9636
 eusales@pixera.com

Pixera Japan (Japan)

Tel: +81 44 850 2800
 Fax: +81 44 850 2868
 jpsales@pixera.com

Camera System Features

- Resolutions: 1260x960, (1280x1024 Macintosh) 1024x768, 800x600, 640x480, 480x360, 320x240, 160x120
- Image Sensor: 1/3", IF-CCD, 270,000 pixels
- Sensitivity: 0.3lux
- S/N Ratio: 52dB
- 24 bit RGB
- 100% Software Signal Processing
- Frame Averaging - Up to 256 frames
- Histogram Equalization
- Adjustable Contrast Expansion
- Adjust Histogram Level
- C-mount
- Tripod screw mount

Precision Measurement Tools

included in Pixera Studio Pro (Windows®)

- Line & Perimeter Distance
- Angle Measurement
- Centroid - area, center of gravity
- Histogram Display

120es Application Suite

- Windows®:
- Viewfinder Pro
 - TWAIN Viewfinder Pro
 - Studio Pro
 - Motion
 - Album
 - Video for Windows®
- Mac® OS:
- Adobe® Photoshop® Plug-In

Image Formats

- TIFF, JPEG, PICT, Flash Pix

System Requirements

- Windows® 95/98/Me/NT/2000/XP
- Mac® OS 8.5-9.2.x
- Interface: PCI slot for desktops
- CPU: (Windows®) 133MHz or faster
- RAM: 64MB, 128MB or more
- HDD: 100MB of free space or more
- Monitor: 1024 x 768 pixels or more
- Color: 16 bits. 24bits or more recommended