

Professional

1.2 Million Pixel Digital Camera System

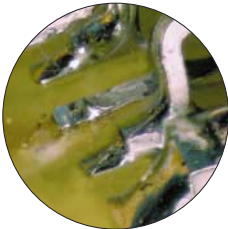
Windows® & Mac® OS



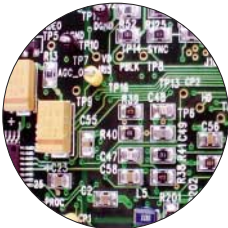
Human Intestinal Tissue
Brightfield



NFP, Chicken Embryo
Brightfield



Inspection of LSI Lead



Inspection of PCB



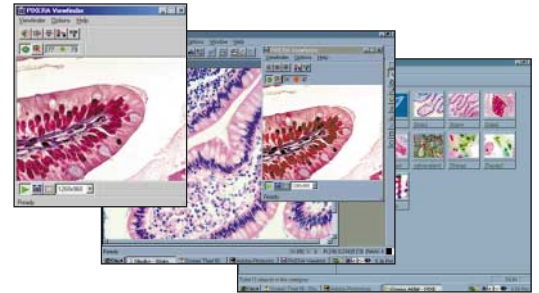
Professional mounted on a microscope or inspection stand using a C-mount adapter.

1.2 Million Pixels¹⁾ Excellent Image Quality Sensitivity, 2.5lux Color Viewfinder Feature-Rich Application

¹⁾ 1.2 million pixels is achieved by patented DiRactor™ technology.

Applications:

- Medical - Pathology, Histology
- Biological - Cell Biology, Bright Fluorescence
- Materials Science - Metallurgy, Geology
- Industrial - QA/QC, Inspection



This easy to use camera system include several powerful software tools that makes it an industry leader for basic photo microscopy. The system include Pixera -Viewfinder, -Studio, -Album and -Motion for time lapse.

Professional - 1.2 Million Pixel Digital Camera System

Professional is a versatile, Digital Camera System that supports a wide variety of microscopy applications including brightfield, darkfield, polarized, phase contrast and even bright fluorescence.

The Professional is easy to use, fast and connects to almost any microscope using a standard C-mount adapter. Bundled with a suite of powerful applications for Windows® and Mac® OS systems.

The Professional is the price performance leader in high-resolution digital cameras delivering image quality at a price that is a fraction of competing cameras.

Pixera Corporation (USA/International)

Tel: (1) 408 341 1800, Tollfree: 1-888-474-9372
Fax: (1) 408 341 1818
sales@pixera.com
www.pixera.com

Pixera UK Ltd (Europe)

Tel: +44 (0) 118 931 9635
Fax: +44 (0) 118 931 9636
eusales@pixera.com

Pixera Japan (Japan)

Tel: +81 44 850 2800
Fax: +81 44 850 2868
jpsales@pixera.com

© 2002 Pixera Corporation.
All rights reserved.

All trademarks are the trademarks of their respective owners. Specifications are subject to change without further notice.

Camera System Features

- Resolutions: 1260x960, (1280x1024 Macintosh) 1024x768, 800x600, 640x480, 480x360, 320x240, 160x120
- Image Sensor: 1/3", IF-CCD, 270,000 pixels
- Sensitivity: 2.5lux
- S/N Ratio: 52dB
- 24 bit RGB
- 100% Software Signal Processing
- Included Lens: C-mount, F/2.1 f=5mm
- C-mount
- Tripod screw mount

Image Formats

- TIFF
- JPEG
- PICT
- Flash Pix

(VCS) Visual Communication Suite

- Windows®:
- Pixera Viewfinder
 - Pixera Studio
 - Pixera Album
 - Pixera Motion (Time Lapse)
 - TWIN Viewfinder
 - Video for Windows
- Mac® OS:
- Viewfinder
 - Studio
 - Album
 - Adobe® Photoshop® Plug-In
 - Pixera VDIG extension

System Requirements

- Windows® 95/98/Me/NT/2000/XP
- Mac® OS 8.5-9.2.x
- Interface: PCI slot for desktop PC
- CPU: (Windows®) 133MHz or faster
- RAM: 64MB, 128MB or more
- HDD: 100MB of free space or more
- Monitor: 1024 x 768 pixels or more
- Color: 16bits, 24bits or more recommended